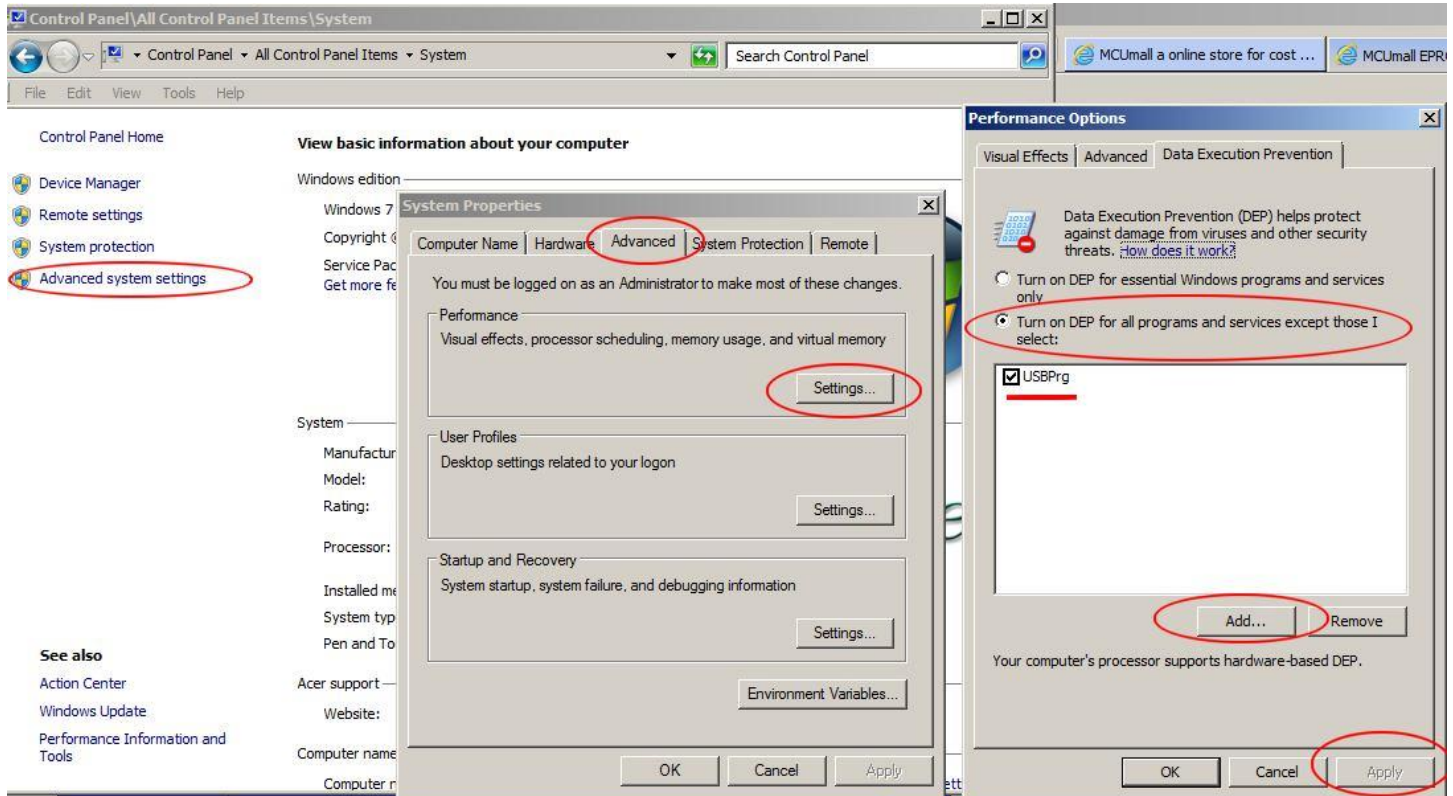


GQ-4x4 USBPrg 7.00 software crash fix:

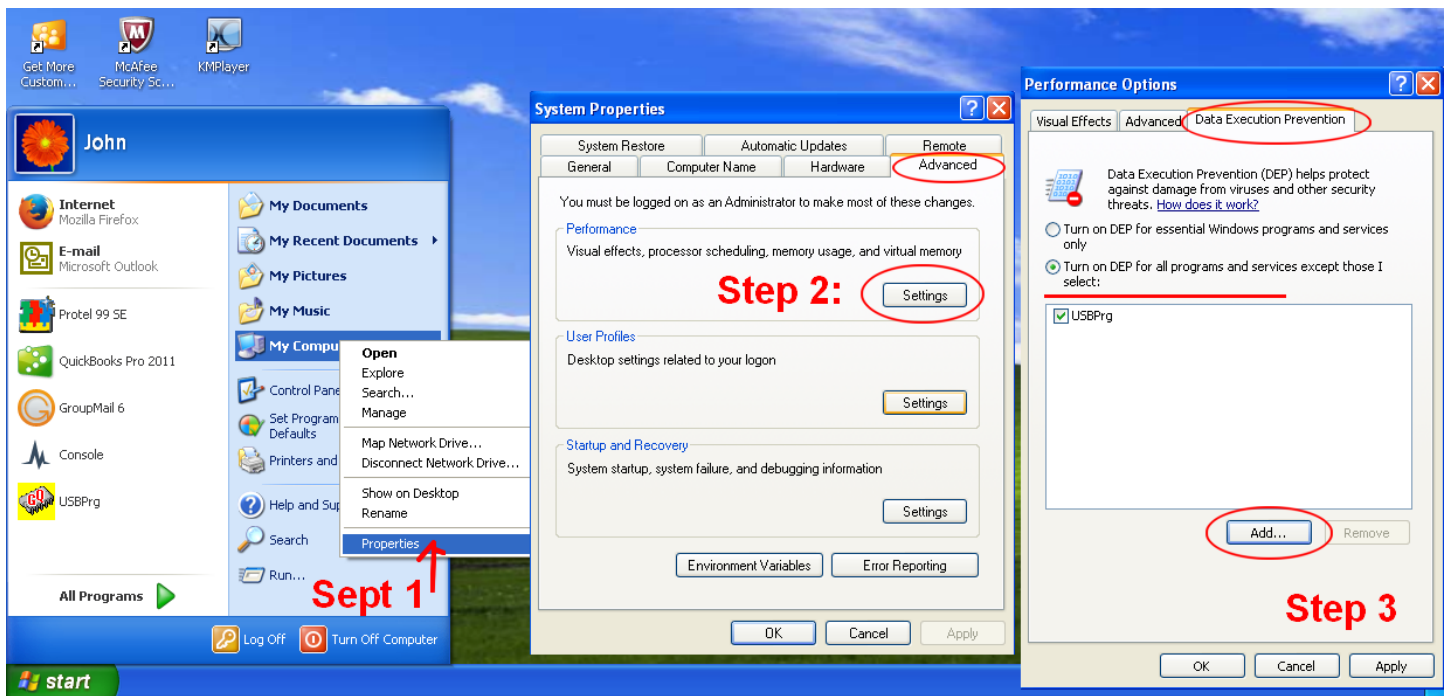
Due to the Windows configuration, some Windows DEP settings causes USBPrg software crash. In this case, user need to turn on the the DEP feature from the Windows. Followings are the examples:

Windows 7,8,10:



The USBPrg.exe location is under "C:\Program Files (x86)\GQ USB Programmer\USBPrg.exe"

For Windows XP:



USBPrg.exe location: "C:\Program Files\GQ USB Programmer\USBPrg.exe"